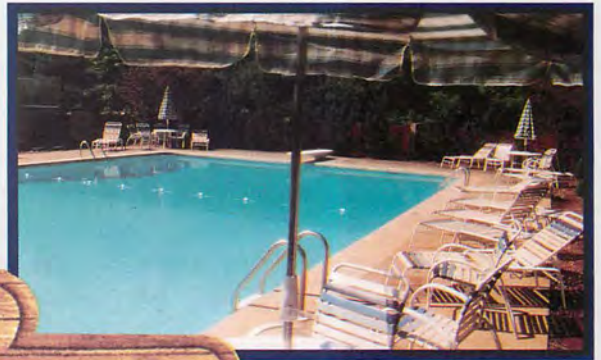




# ETOWAH'S REACH



ENTRANCE



POOL



CLUBHOUSE



TENNIS COURTS

**SALES OFFICE**  
36 St. Andrews Drive  
Etowah, NC 28729  
704-891-8885



**GREEN CO. OFFICE**  
220 S. Main St, PO Box 1776  
Hendersonville, NC 28793  
704-692-0583 • 800-762-7059

**What makes Etowah's Reach better?**

Here you can enjoy the country club lifestyle. Join in community sponsored bridge, crafts or exercise in the private clubhouse. Enjoy a game of tennis or a swim in the junior olympic size pool. Join other residents for a round of golf at adjacent Etowah Valley Country Club.

**Will my home be a good investment?**

Only time will tell for sure, but Green Company customers have had very positive results while they enjoy living in a beautiful home. The development of Etowah's Reach has been done in a manner that should add to the appeal of the community as time goes on.

**What will the homes be like?**

There will be a selection of at least three homes with 2 or 3 bedrooms, 2 baths and 2 car garages. Each of these plans will have three different looks of maintenance free materials, either stone and vinyl or brick and vinyl. Depending on the lot you select you may have a partial basement which can be finished into a bedroom, bath and family room.

**What are the available utilities?**

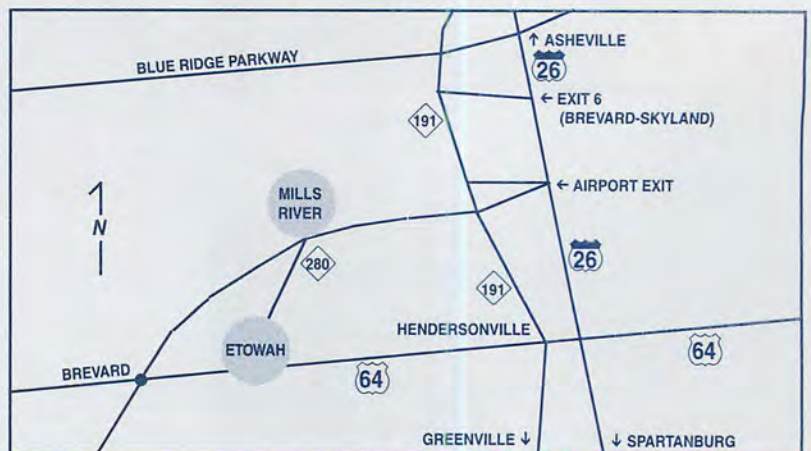
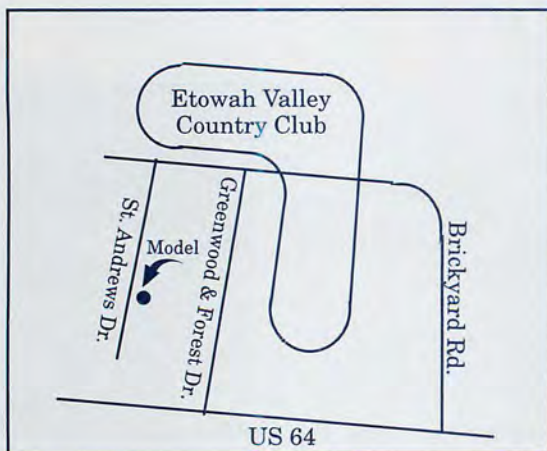
The city of Hendersonville provides water and the Etowah Sewer Authority provides sewer service. The community also has cable TV and natural gas which was chosen as the most efficient way to heat the homes. All these services and low Henderson County Taxes.

**Who will my neighbors be?**

Not only retirees but also professional couples, small families, or those leaving a large home for more manageable living quarters and grounds. This is not a retirement community, but it will attract the active, independent retiree as well as a variety of upscale, smart home buyers. The result will be an interesting composition of friendly people – a special neighborhood.

Throughout this county, builder and developer P. T. Green has established a reputation for quality, reliability, and unique homes designed to be in harmony with their natural surroundings. When you purchase a home at Etowah's Reach, you can rest assured that Green Company craftsmanship flows through your home. Since 1958 the Green Company, with Pete Green at its helm, has built comfortable, well-designed, quality homes for those who appreciate values and excellence. In finishing Etowah's Reach, Pete Green once again proves that the best can get better. We invite you to compare Etowah's Reach to any similar community. You'll find no better place to call home!

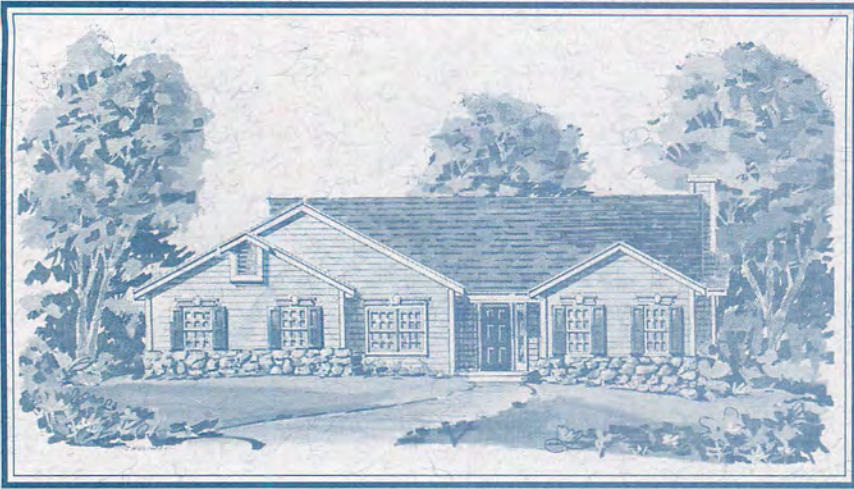
**MAP BELOW**



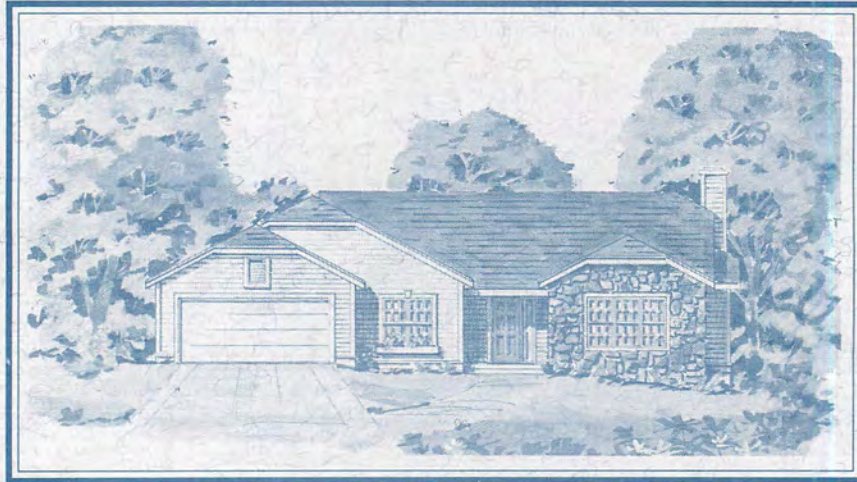


# BRIARWOOD

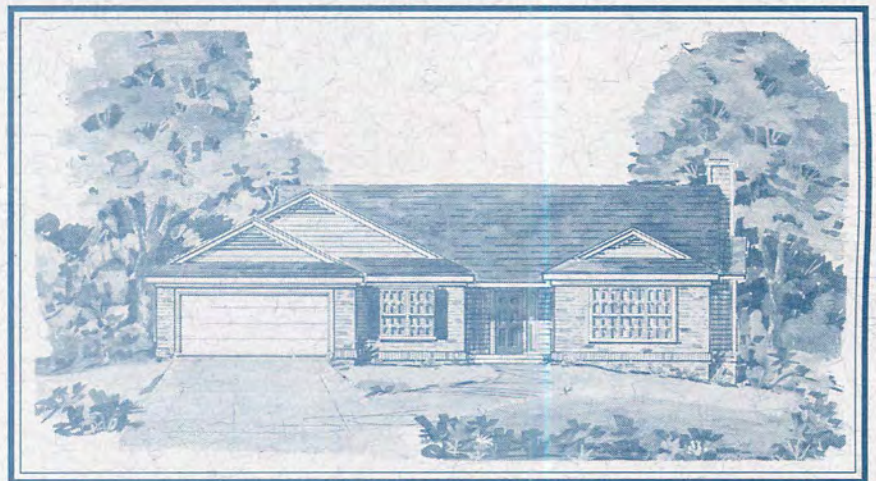
Three Bedrooms  
Two Baths  
1717 Square Feet  
Two Car Garage



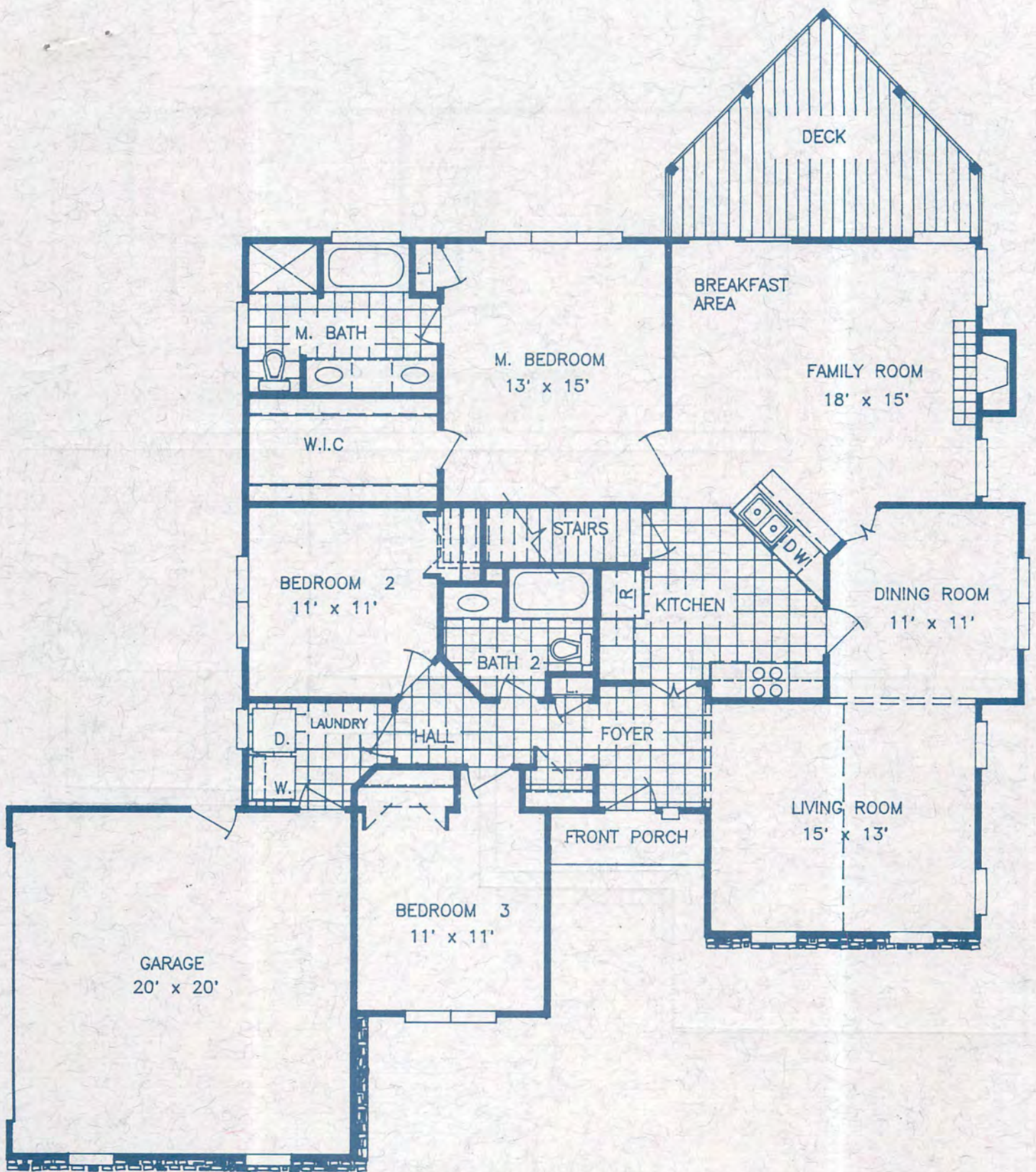
Elevation I



Elevation II



Elevation III

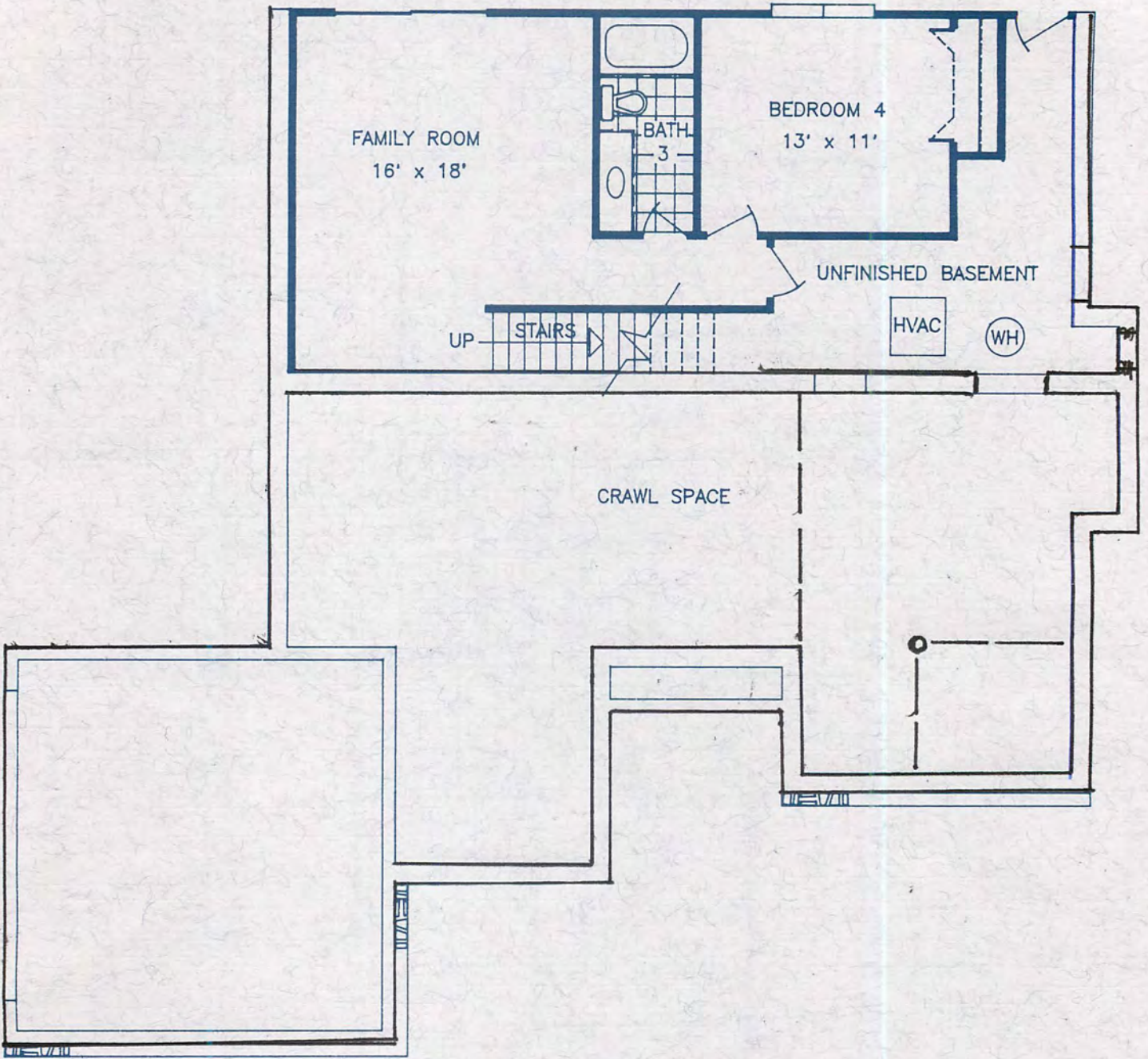


## BRIARWOOD MAIN FLOOR

1717 Heated Square Feet

Measurements are approximate.  
Finished square footages may vary within reasonable limits.

Plans and specifications are subject to builders revisions without notification.



**BRIARWOOD**  
Optional Lower Floor

606 Heated Square Feet

Measurements are approximate.

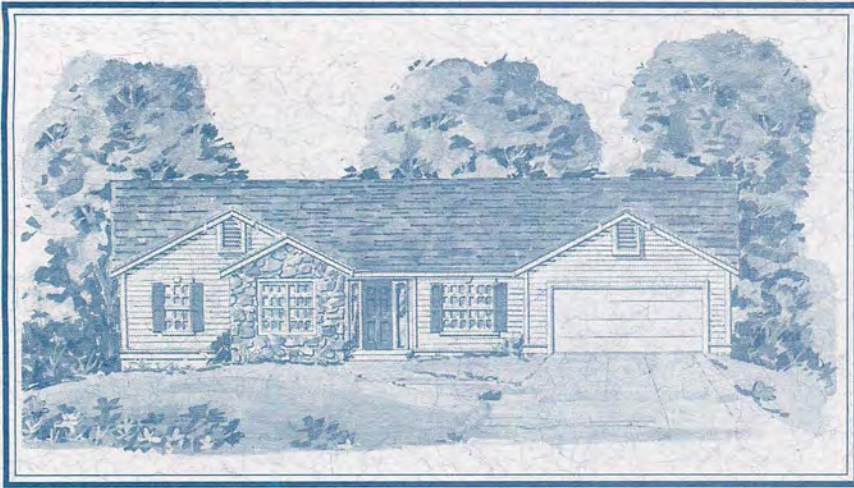
Finished square footages may vary within reasonable limits.

Plans and specifications are subject to builders revisions without notification.

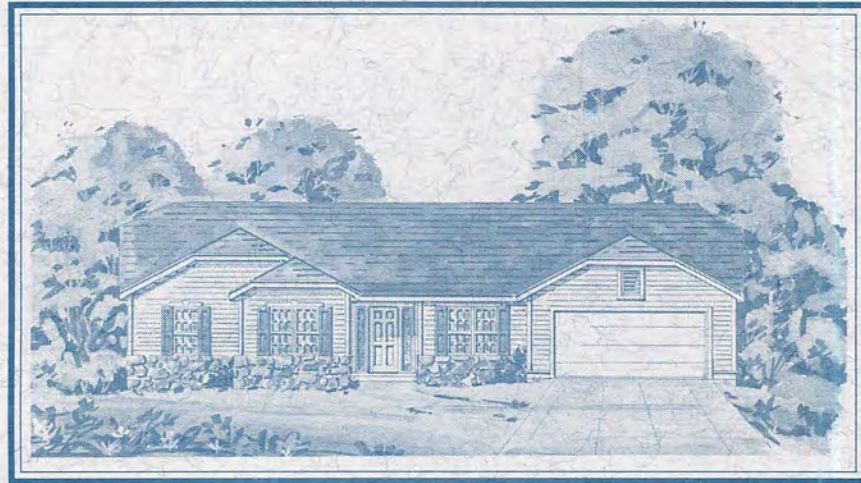


# CEDARWOOD

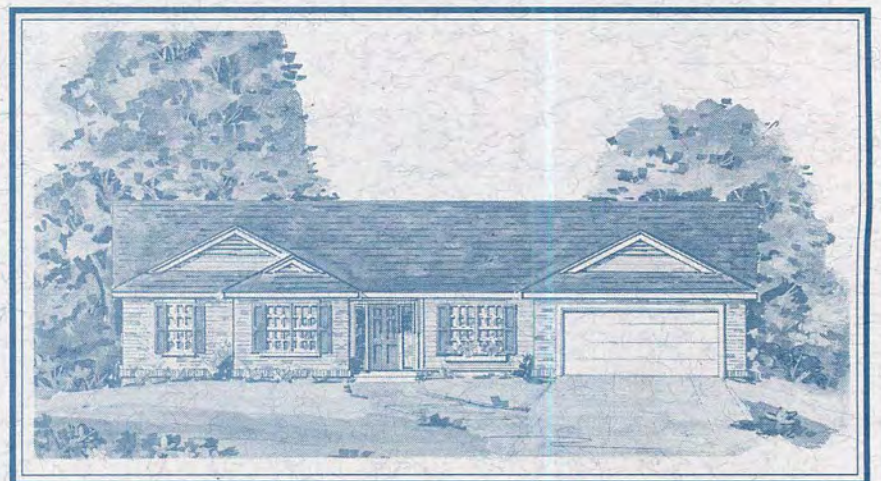
Three Bedrooms  
Two Baths  
1832 Square Feet  
Two Car Garage



Elevation I

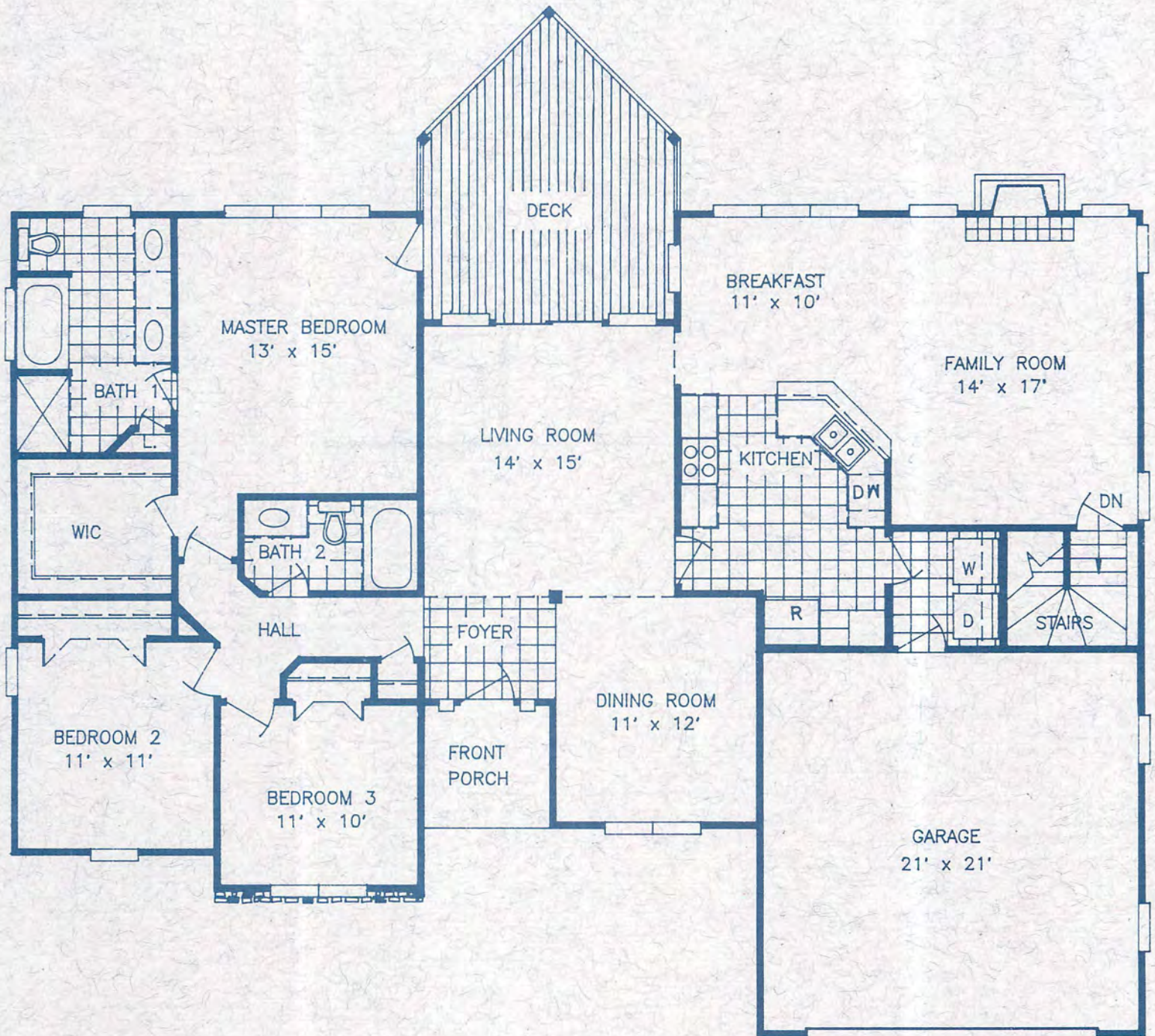


Elevation II



Elevation III





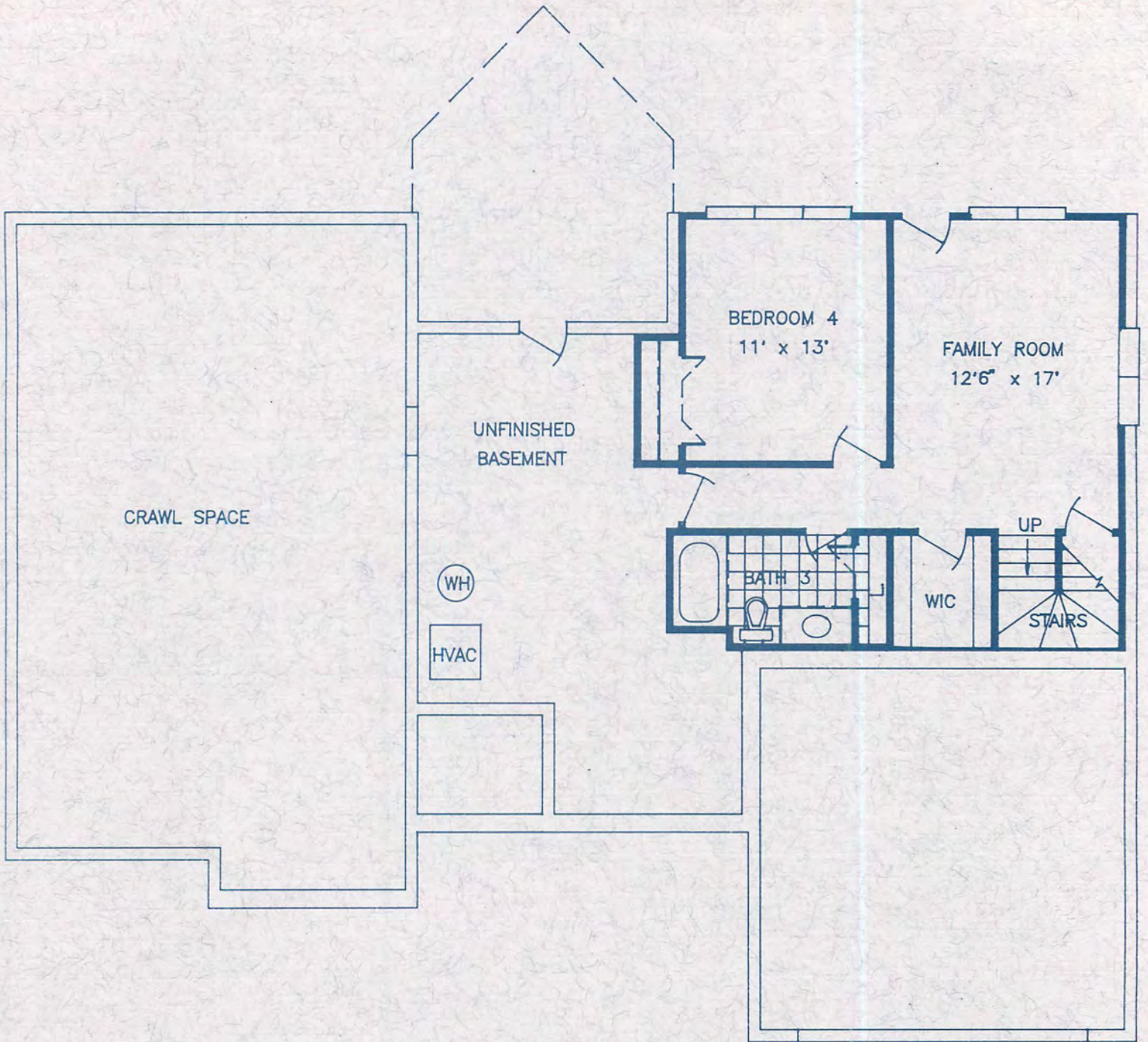
## CEDARWOOD MAIN FLOOR

1852 Heated Square Feet

Measurements are approximate.

Finished square footages may vary within reasonable limits.

Plans and specifications are subject to builders revisions without notification.



## CEDARWOOD

### Optional Lower Floor

**607 Heated Square Feet**

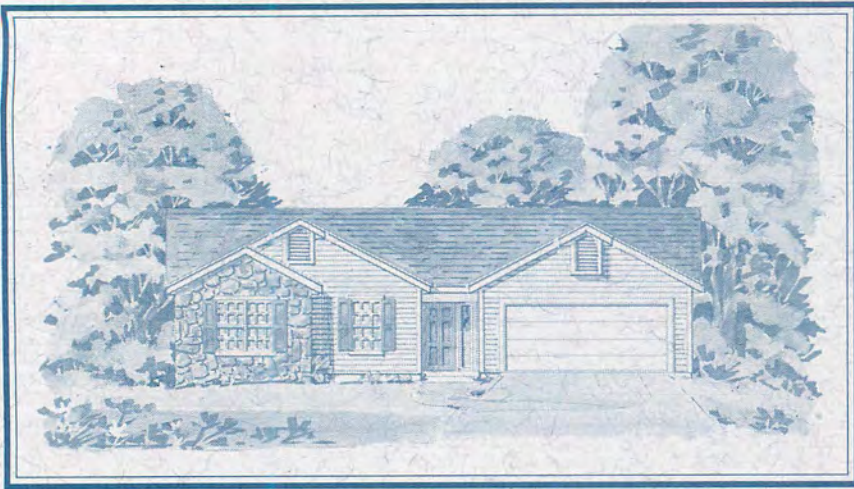
Measurements are approximate.  
Finished square footages may vary within reasonable limits.

Plans and specifications are subject to builders revisions without notification.

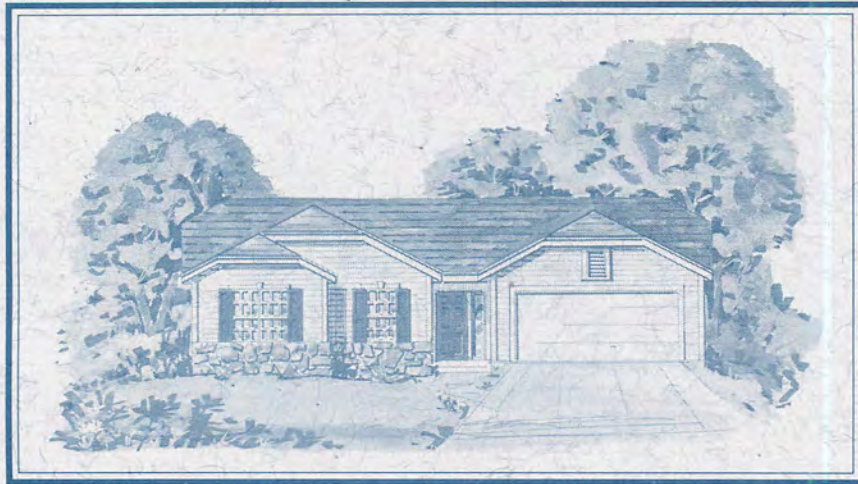


# ASPENWOOD II

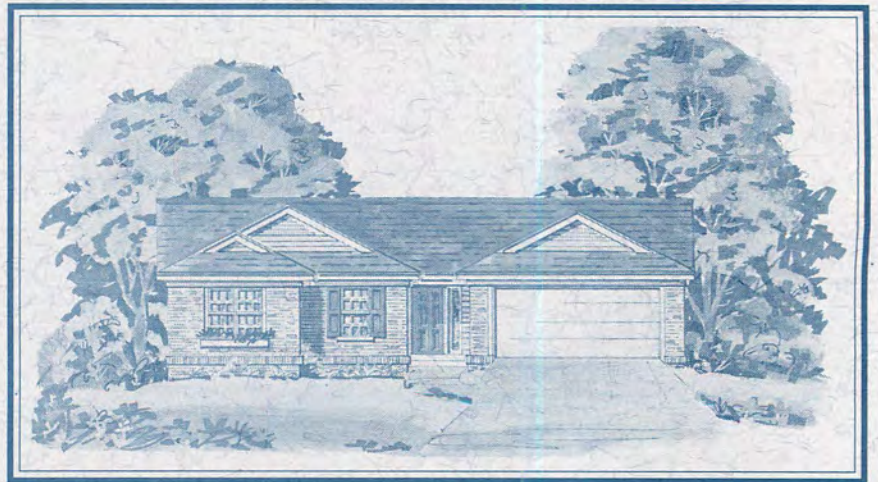
Two Bedrooms  
Two Baths  
1438 Square Feet  
Two Car Garage



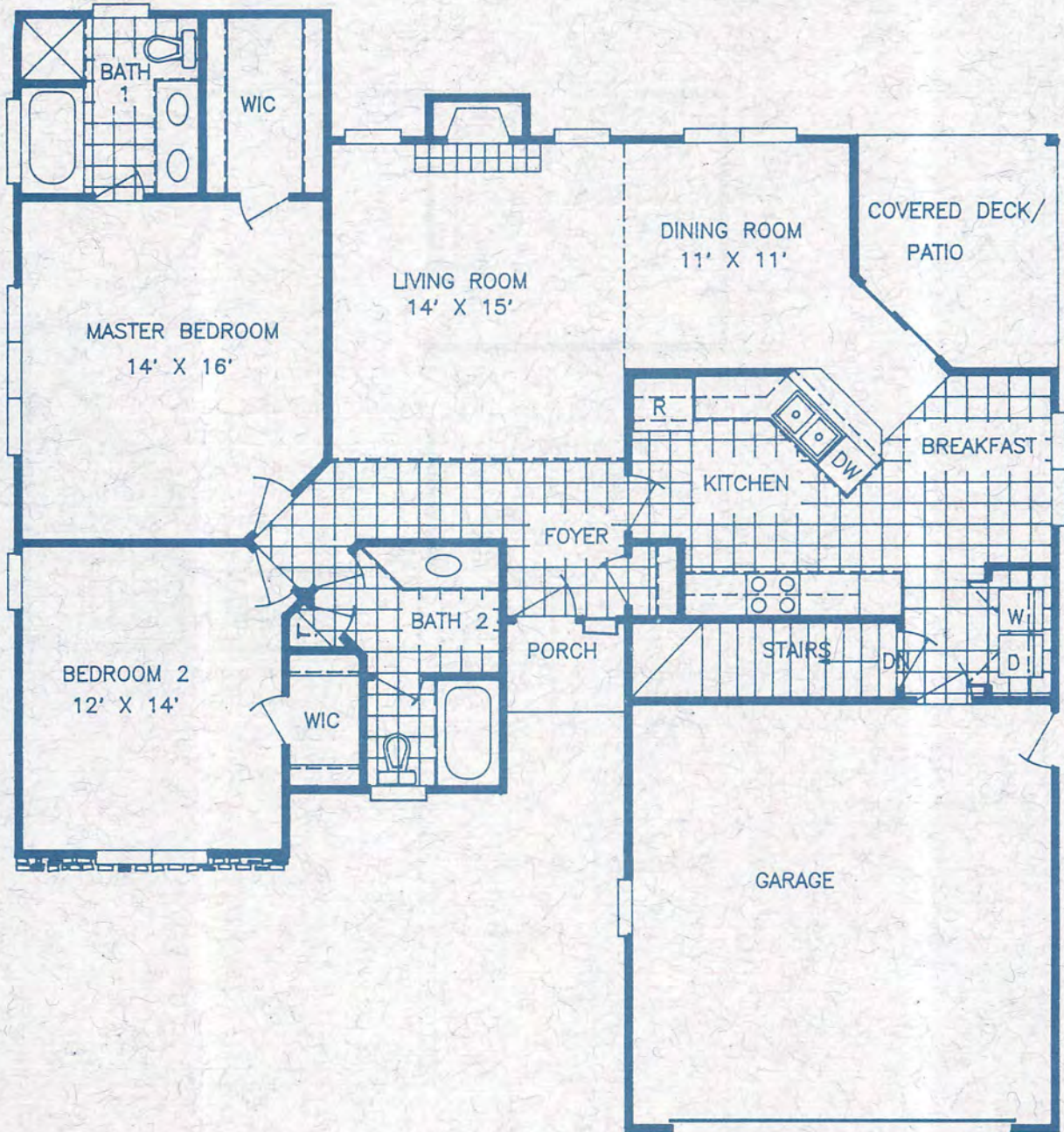
Elevation I



Elevation II



Elevation III

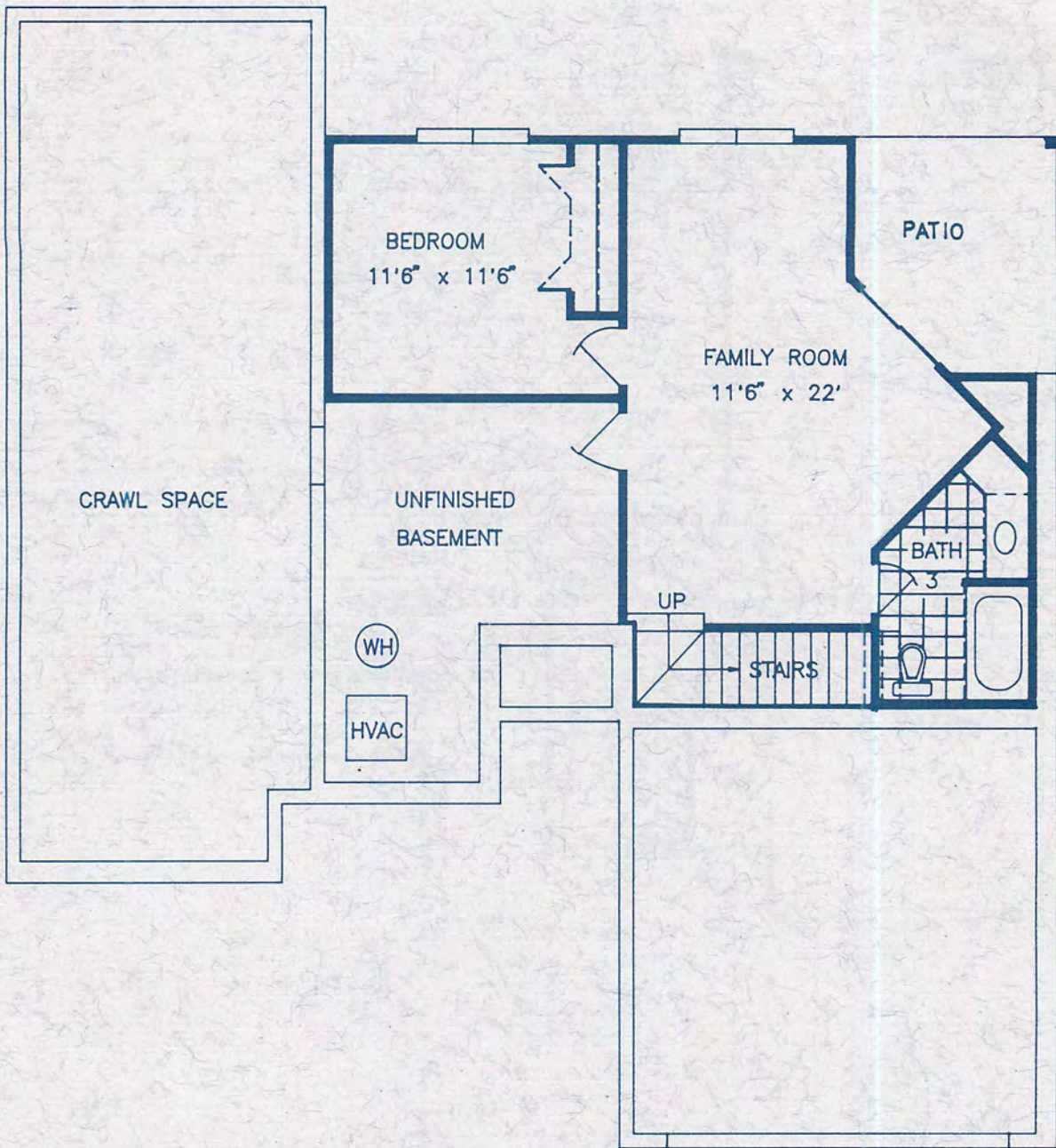


## ASPENWOOD II MAIN FLOOR

1438 Heated Square Feet

Measurements are approximate.  
Finished square footages may vary within reasonable limits.

Plans and specifications are subject to builders revisions without notification.



## ASPENWOOD II

Optional Lower Floor

601 Heated Square Feet

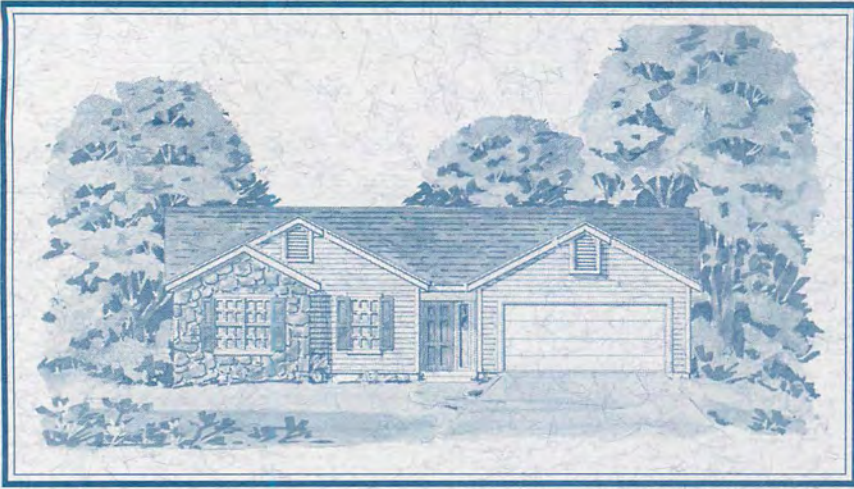
Measurements are approximate.  
Finished square footages may vary within reasonable limits.

Plans and specifications are subject to builders revisions without notification.

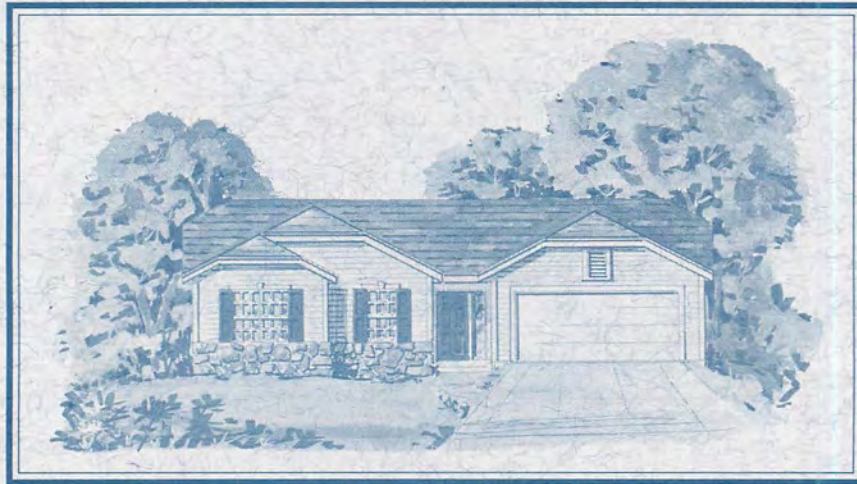


# ASPENWOOD III

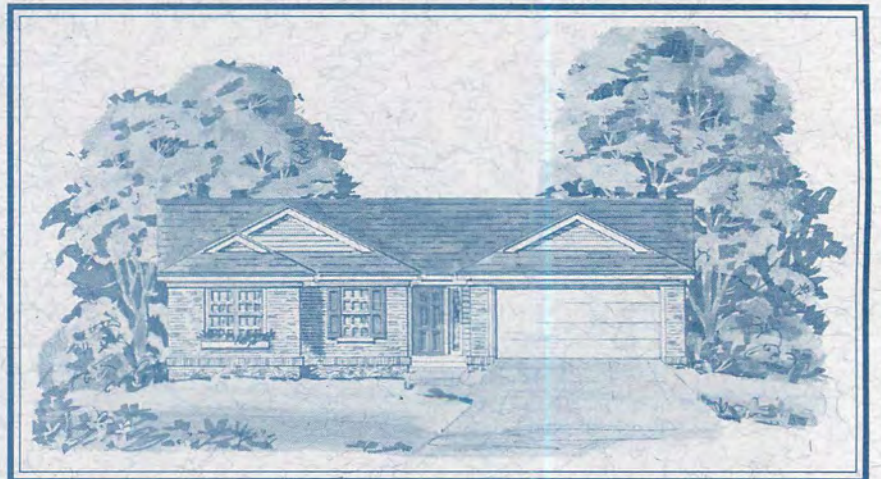
Three Bedrooms  
Two Baths  
1438 Square Feet  
Two Car Garage



Elevation I

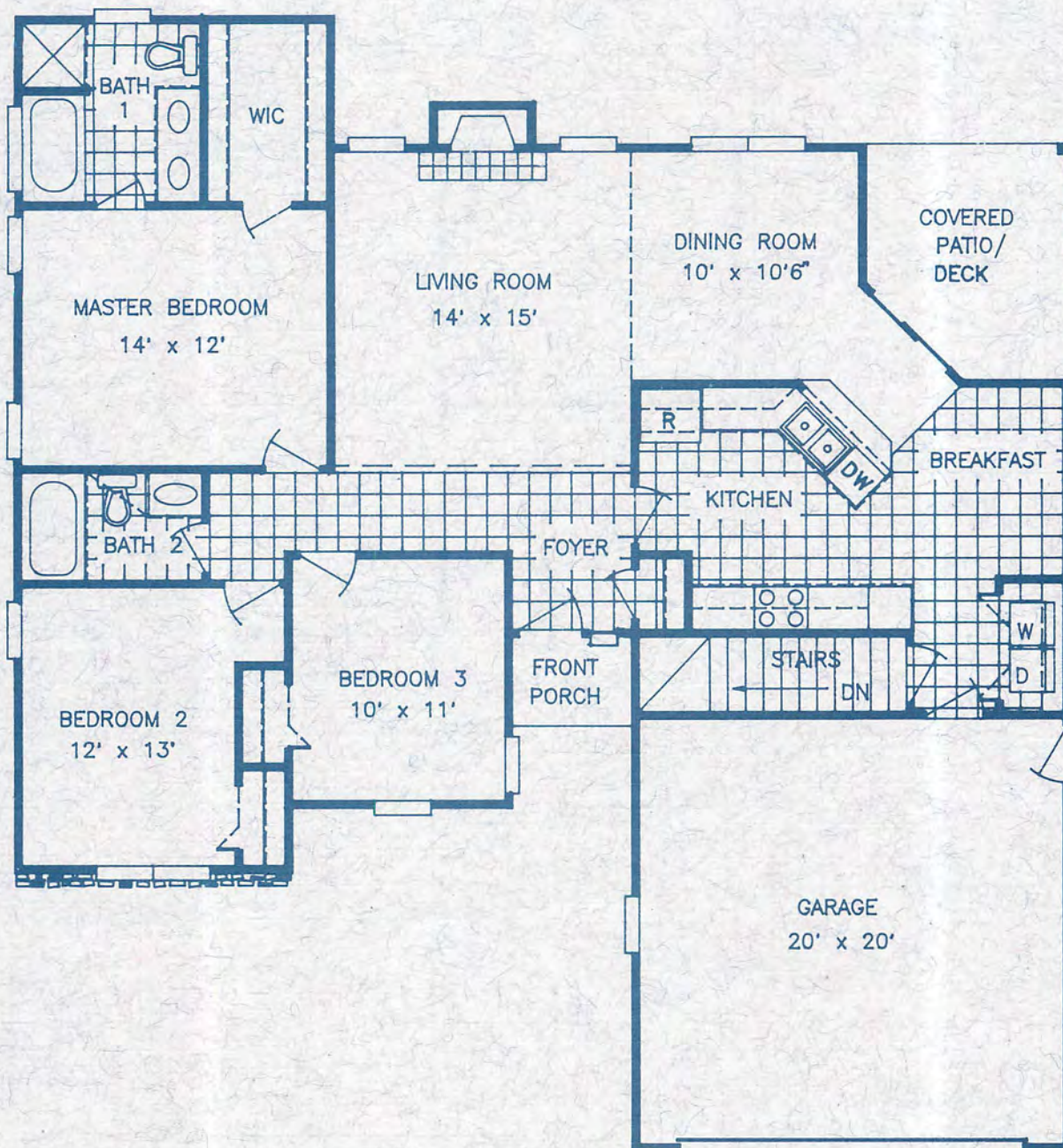


Elevation II



Elevation III





## ASPENWOOD III

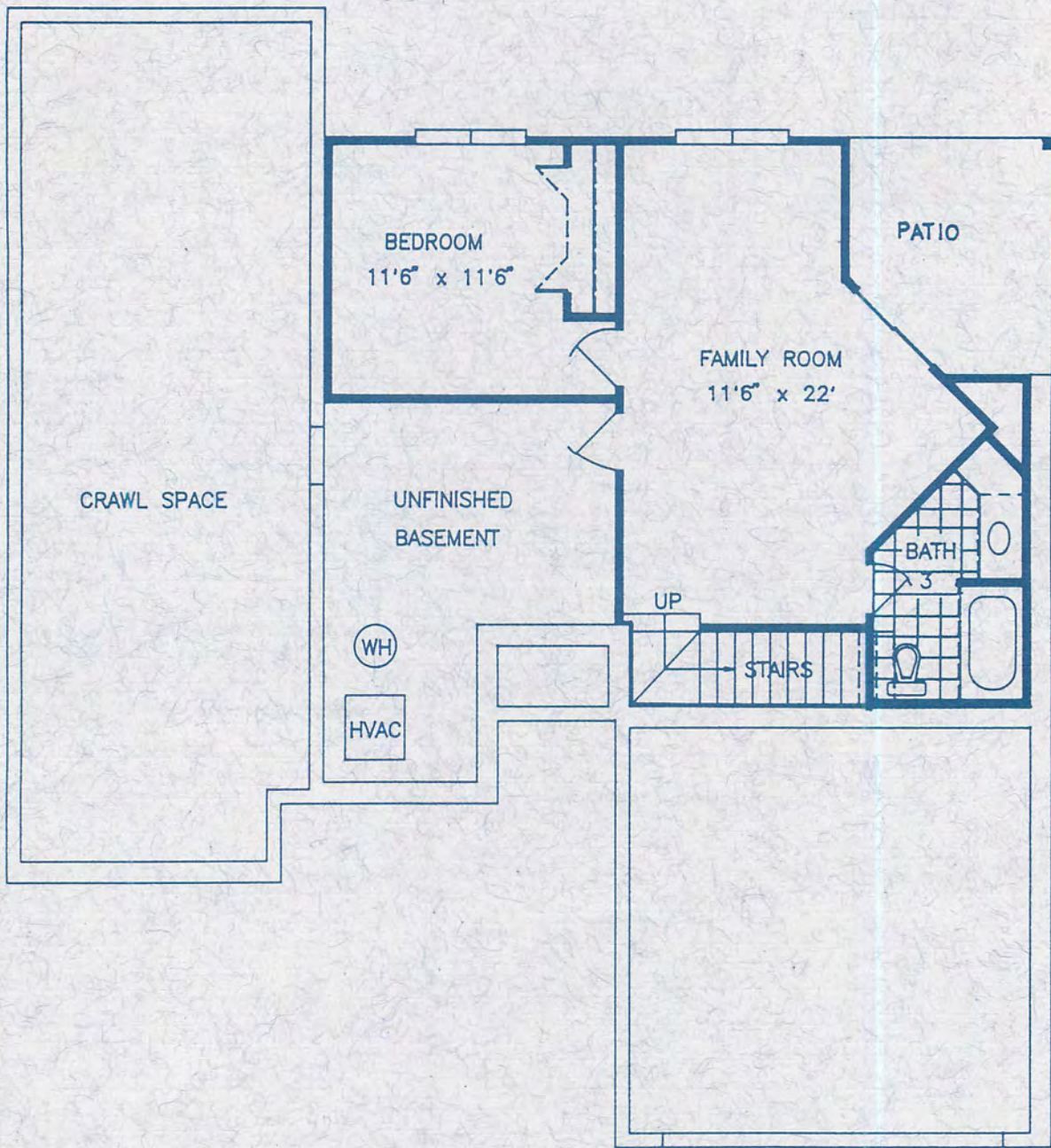
### MAIN FLOOR

1438 Heated Square Feet

Measurements are approximate.

Finished square footages may vary within reasonable limits.

Plans and specifications are subject to builders revisions without notification.



## ASPENWOOD III

Optional Lower Floor

601 Heated Square Feet

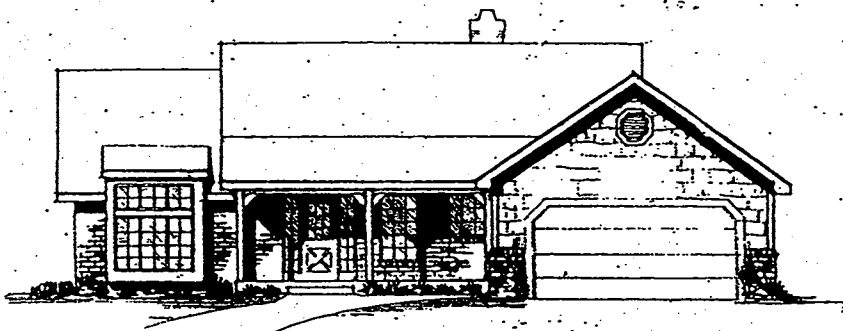
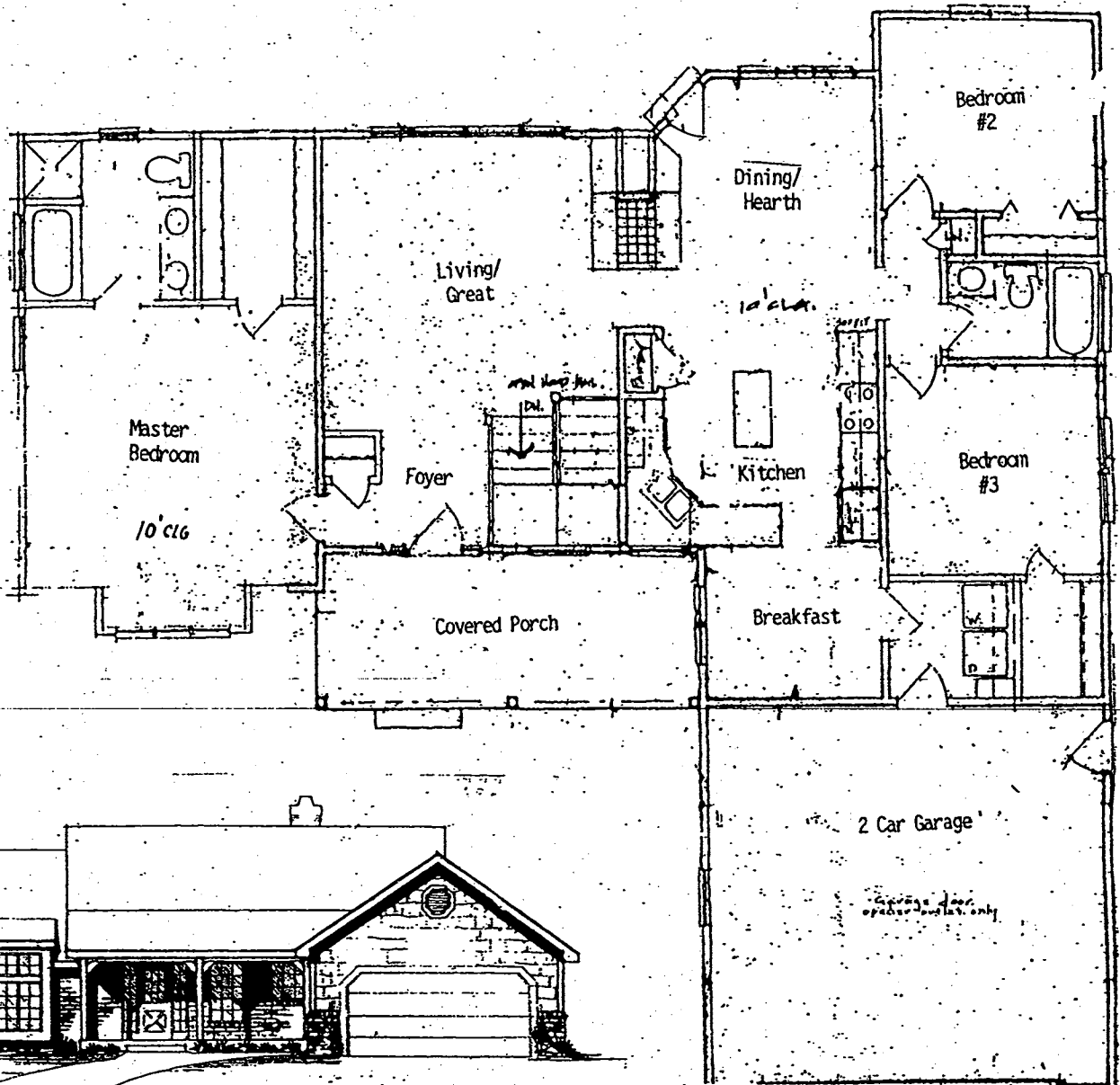
Measurements are approximate.

Finished square footages may vary within reasonable limits.

Plans and specifications are subject to builders revisions without notification.



# Dogwood



# ETOWAH'S REACH

# Price List

## REMAINING HOMES TO BE BUILT IN ETOWAH'S REACH

Price is for house and lot with full daylight unfinished basement!

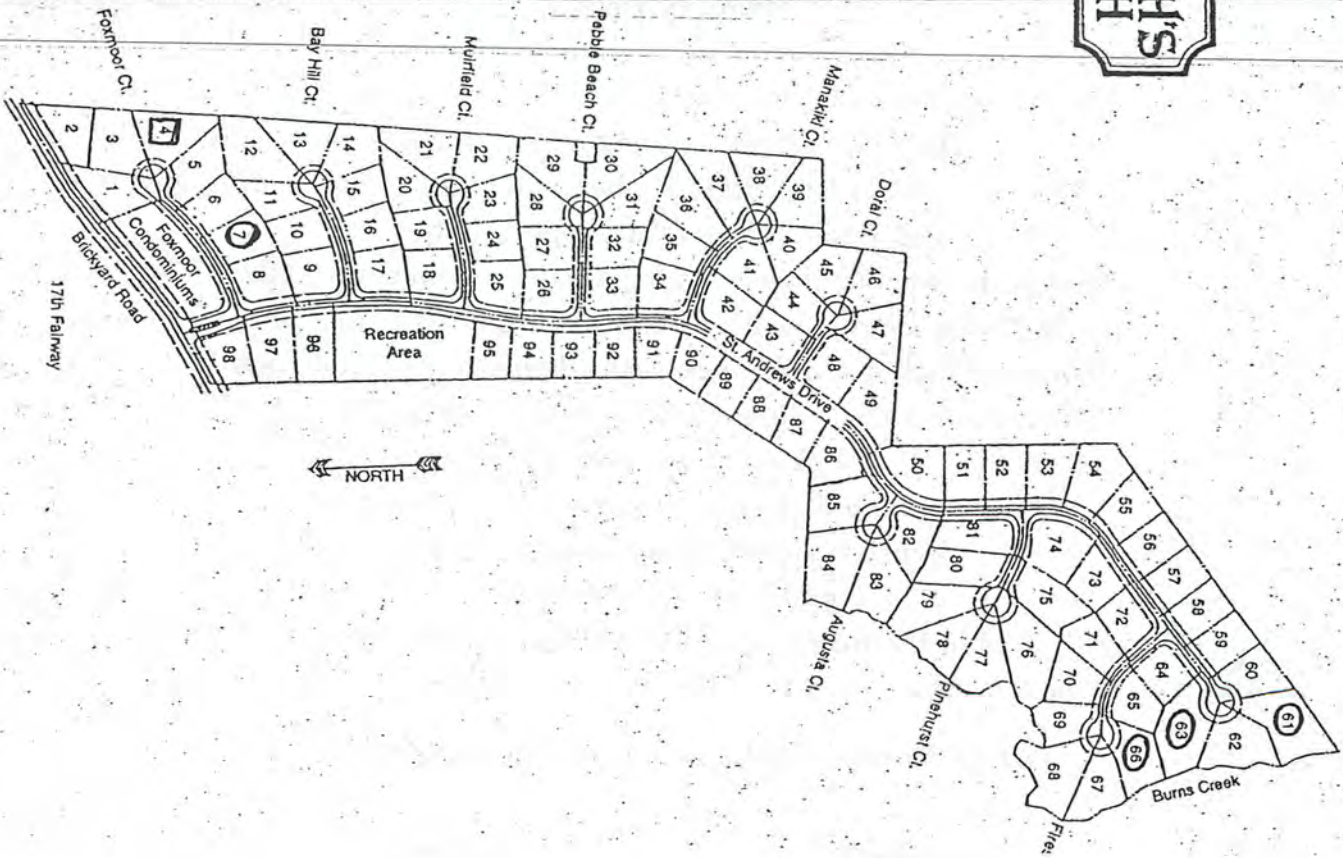
Lots available # 7, # 61, # 63, # 66

Completion dates starting 01/31/01

HOUSE	SQ/FT*	PRICE	LOT #4 ONLY CRAWL SPACE PRICE
Aspenwood	1438	\$179,000	\$159,000
Briarwood	1717	\$199,000	\$175,000
Cedarwood	1832	\$209,000	\$184,000
Dogwood	1587	\$189,000	\$169,000
Edgewood	1568	\$191,000	\$169,000

\* SQ/FT is from plans, finished house may vary from stated amount

# Site Plan



**ATTRACTIVELY MATURING COMMUNITY**

Across street from Etowah Valley Country Club

Clubhouse with kitchen and meeting room

Two recently refinished tennis courts

Junior Olympic size pool

Paved streets and driveways

Hendersonville city water

Etowah sewer authority

Low county taxes

**FUNCTIONAL TWO AND THREE BEDROOM DESIGNS**

On crawl space or partial basement

Finished basement can have bedroom, bath and family room

Open floorplans with eating counters

Maintenance free exteriors of vinyl with brick or stone accents

High efficiency gas heat , gas water heater

Electric air conditioning

Fireplace with tile facing and wood mantle

Two car garage

Porch or Deck

---

Dining room and breakfast area

Single hung, two pane, tilt to clean windows

High or cathedral ceiling in each model

Soffit lighting in kitchen and baths

Cultured marble vanity tops in baths

Separate tub and shower with glass doors in master bath

Merrillat cabinets with three standard design choices

Appliances included are range, hood, dishwasher and disposal

Utility area with hookups for side by side washer and dryer

Mailbox and post provided

Gutters and downspouts piped away from house

Ventilated coated steel closet shelving

Outside electric receptacles

Cable TV outlets and phone outlets in two rooms

# ETOWAH'S REACH

# Site Plan

